

Early Childhood Intervention in Europe

September 3rd - 4th 2008 in Kristiansand



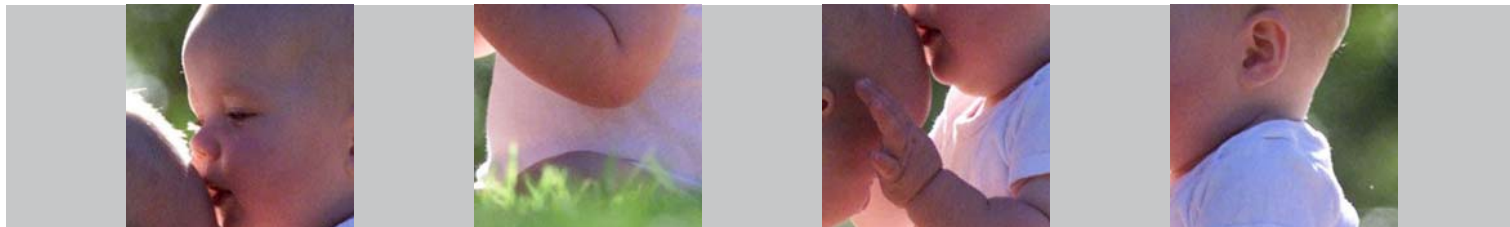
**Sørlandet
kompetansesenter**

Statlig spesialpedagogisk støttesystem



EUROPEAN ASSOCIATION ON EARLY CHILDHOOD INTERVENTION

EURLYAID - E.A.E.C.I.



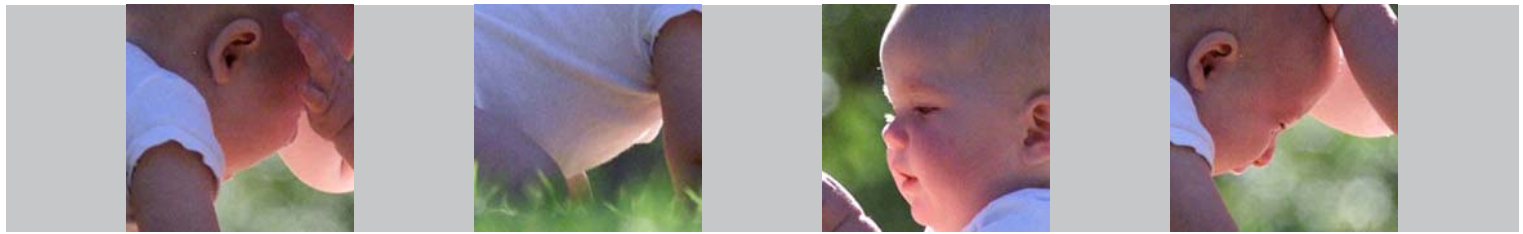
How to make a Difference in Early Childhood Intervention in Europe

September 3rd 2008

Niels Henrik Abels hus, Tordenskjoldsgate 68

Conference:

09.30	Opening Puppeteer Giert Werring Director Dineke Heck Tingstveit, Sørlandet Support Centre for Special Needs Education
10.00	<i>"Early Childhood Intervention at the Start of the 21st Century – some European reflections"</i> Prof. Dr. F. Peterander, Ludwig-Maximilians University Munich, Germany
11.15	<i>"A Norwegian Framework for strengthening Infant Mental Health"</i> Head of Department Marit Bergum Hansen, National Network for the Study of Infant Mental Health in Norway
12.15	Lunch
13.00	<i>"The Snyder family: Helping Professionals Build Family-Centered Practices"</i> Director Marylin Espe-Sherwindt, Family Child Learning Center- Ohio Auxiliary Professor Ana Serrano, University of Minho, Portugal
14.15	<i>"Welcome home – creating a good place for the baby"</i> Director Dirk Mombart, Kangoeroe Centre, Belgium
15.30	Coffee
16.00	<i>"Fathers of children with special needs"</i> Director Leif Nord, Child and youth centre of rehabilitation, Århus, Denmark
17.00	Closing President or Eurllyaid Karin Mosler and Head of Department Jarl Formo, Sørlandet Support Centre
17.15	Guided tour in the city
19.00	Reception in the City Hall Vice mayor of Kristiansand Mette Gundersen
20.30	We have reservations at the following restaurants: Makrellen, Bølgen & Moi, Hartmanns brygge or Sjøhuset (not included in the fee)



Good Practice in Early Childhood Intervention

September 4th 2008

Sørlandet kunnskapspark, Gimlemoen 19 (University campus)

Seminars:

		A	B	C
1	09.00	Elena Kozhevnikova, Russia "Against separation - early intervention in Russia, Byelorussia and Ukraine"	Ena Caterina Heimdal, Norway "Feeding disorders and prematurity - how to meet the challenges"	Berit Aanensen, Norway "Pedagogical/psychological Agency – Norway's formal system for assessment and counselling for special needs education"
2	10.15	Stefanija Alisauskiene, Lithuania "To be a professional in Early childhood Intervention"	Tone Dalvang, Norway "Numicon – supporting learning of basic mathematics"	Margit Aalandslid and Bente Naglestad, Norway "Successful transition into school for premature children"
3	11.30	Violaine Van Cutsem, Belgium "Early relationship between the multihandicapped children; children and parents"	Arlene Temte and Kirstin Bergem, Norway "Networking groups for language training, Karlstad model"	Else Jorun Karlsen, Norway "Marte Meo: Interaction, the key to life: Seeing possibilities of children through video pictures"
	12.30	Lunch		
4	13.30	Alexander Trost, Germany "Drug addicted mothers and their babies: Diagnostic Features, Interactional Patterns, Maternal attitudes"	Finnborg Scheving, Norway "A model for assessment of multi-cultural/bilingual children"	Kirsten Ruud and Arlene Temte, Norway "A model for home visiting for premature children"
5	14.45	Nevenka Zavrl, Slovenia "Prechtl's method of assessment of general movements, identifying babies"	Karin Mosler and Anna Kirchschrager, Austria "Insight into the Styrian ECI model - two case studies"	Grethe Hoven, Norway "How to use playing in ECI for children at risk"
	15.45	Coffee break		
6	16.00	Maria Luisa Trindade and Ana Cristina Saloio, Portugal "Step by Step Along with Early Intervention - A case study"	Judit Schultheisz and Piroska Bacso, Hungary "The Huple program and hydrotherapy for premature babies"	Bodil Nordøen and Kari E. Laberg, Norway "Imitation - the first step to communication" <i>Children with autism and related communication difficulties</i>
7	17.15	Marta Ljubescic, Croatia "Early communication as predictor of later outcome"	Maria Tzouriadou, Melanthis Kontopoulou, Greece and Maria Psoinos, UK "An early intervention programme: the case of two pre-schoolers"	Anne Margrethe Rostad and Unni Tranaas Vannebo, Norway "Information about project ADBB – Alarm Distress Baby Scale"
	17.45	Closing		
	19.15	Departure for Eurlayid members and National networking group for adventure tour		

September 5th 2008

09.00	Visiting institutions for Eurlyaid members	Meeting for National Networking Group
13.00	Lunch	
14.00	Eurlyaid meeting	
Ca. 19.30	Departure for Eurlyaid members	

September 6th 2008

09.30	Eurlyaid meeting	
14.00	Lunch	

Sørlandet Support Centre for Special Needs Education is hosting the conference Early Childhood Intervention in Europe. Members from Eurlyaid, members of the National Networking group for Early Childhood Intervention for Special Needs Education and Sørlandet Support Centre will be lecturing and giving seminars. The content will be new trends in early intervention, examples from recent research, case studies, assessment and methods for supporting the development for young children with special needs.

Sørlandet Support Centre is a resource centre for complex learning difficulties and a unit of the Norwegian Support System for Special Needs Education, Statped. Sørlandet support centre has had the national responsibility for Early Childhood Intervention.

Eurlyaid/European Association on Early Childhood Intervention is an organisation for people who are interested in working with Early Childhood Intervention and is open to members from all countries in Europe. Read more: www.eurlyaid.net.

The National Networking Group for Early Intervention for Special Needs Education was established in 2000 by Sørlandet Support Centre. It is a cross sectorial and multi-interdisciplinary networking group with members from all the 19 counties in Norway.

The goal for the conference is to be a meeting place for learning, inspiration, contact and sharing and gaining experiences. The main conference and the seminars consists of high quality lectures with possibility for reflections and professional discussions. The conference is a place for professionals and parents changing experiences from different countries, establishing contact and creating network.

Sørlandet Support Centre
Gimlemoen 19
NO 4630 Kristiansand, Norway
Telephone: 0047 38 05 83 00
Fax: 0047 38 02 02 88
Web-site: www.statped.no/sorlandet